

Suite 7 - 422 Saint Mary's Street - Raleigh, NC



Location: Raleigh, NC

Glenwood South: Ideal Location - Near Cameron Village | Downtown Raleigh | Cameron Village | Capital Boulevard | NC State University | Wade Avenue all within minutes.

This office is ideal for a Solo Professional or Small business Owner who wants a quiet, administrative office for working and occasional meetings. If you are looking for a One or Two person office, or looking to move out of your home office and desire to have a quiet and beautiful office space, with convenience and privacy, this Professional Office Space located in Glenwood South is the perfect space for a Consultant, Sales, or Other Small Business Use. This is an Attractive Office Building with private entrance from parking area directly into this Elegant 530 Sq. Ft. Executive Office Space. Two Large Offices with Built in bookshelves, kitchen, bathroom with shower, plenty of storage space, built in shelving, and more.

RENTAL FEATURES:

- * 2 Private Offices - Spacious 500 Sq. Ft. Executive Office Suites in a quiet, professional environment.
- * Features two 11' X 11' Offices with adjoining door and direct entry from street.
- * Kitchen equipped with stove, refrigerator, double basin sink with base cabinet and drawers.
- * Bathroom complete with shower, sink, commode, mirrored wall, and customized blinds.
- * Multiple storage areas such as 4' X 11' storage room and 5' X 5' full length closet.
- * Built in shelves on each wall as well as customized shelving from floor to ceiling between offices.
- * Attractive overhead recessed lights throughout entire office area.
- * Rent includes all utilities (electricity and water.)
- * One Year Standard Commercial Lease.

LEASE TERM: Standard One Year Commercial Lease: Rent Amount - Available Upon Request

INFORMATION

CONTACT INFORMATION

Paul Jansen
pjansen@jansenproperties.com
919-833-7142

PRICING

Available Date: Mon Jun 15, 2015
Minimum Lease: 1 Year
Utilities Included: Yes

PROPERTY LOCATION

422 Saint Mary's Street
Raleigh, NC 27605

LINKS

- www.jansenproperties.com/Suite_7_-_Flyer.pdf

ATTRIBUTES

BUILDING AMENITIES

- Free Parking
- Good Accustics
- Utilities Included
- Central Air
- Private Entrance
- Professional Building

OFFICE AMENITIES

- Kitchen
- Reserved Parking
- Customized Shelving
- Recessed Lights
- Bathroom Shower
- Storage Room
- Utilities Included
- Bookshelves
- Full Sized Closet

PHOTO GALLERY



POWERED BY VFLYER.COM

VFLYER ID: 270086011

All information in this site is deemed reliable but is not guaranteed and is subject to change

Photo Gallery



The Front Of The Building on Saint Mary's



Attractive 11' X 11' Office With Built In



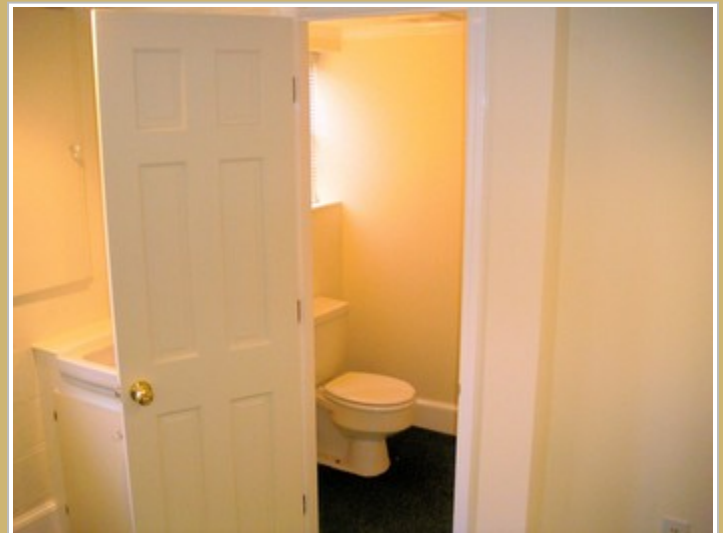
View Of Kitchen (With Stove & Refrigerator



Side View Of Building From Tucker Street



Another View Of Side Of Building Facing Tu



View Of Private Bathroom With Shower

PAUL JANSEN | 919-833-7142 | PJANSEN@JANSENPROPERTIES.COM

Photo Gallery



Office Features Vanity Sink & Bathroom W



Side View Of Building With Off Street Park



Front Left Corner Of Building On Saint Mar



Outside Wall Of 1st Office With Track Lighting



Entry Door To Suite #7



View Of Extended Rear Parking And Rear Entrance

PAUL JANSEN | 919-833-7142 | PJANSEN@JANSENPROPERTIES.COM

Photo Gallery



Close Up Of Private Rear Entry Door To Suite



Multiple Storage Areas Including 5' X 5'



Ground Level View Of Archways to Both Offices



View of Rear Corner and Side Of Building



Front View Of Building On Saint Mary's Street



Exceptional 530 Sq. Ft. Executive Suites

PAUL JANSEN | 919-833-7142 | PJANSEN@JANSENPROPERTIES.COM

Photo Gallery



View of 2nd 11' X 11' Office With Shelvin



View Of Building With Windows And Off Stre



View Of Rear Entrances To Office Building



Bookshelf & View Of Office



View of 2nd Office With Customized Shelvi



View Of Side Of Building Facing Tucker Str

PAUL JANSEN | 919-833-7142 | PJANSEN@JANSENPROPERTIES.COM